

**CLATSOP COUNTY, OREGON
ADOPTED BUDGET
FY 2011-12**

**Board of Commissioners
Dirk Rohne, Chairperson**

Peter Huhtala, Vice Chair

Scott Lee, Commissioner

Patricia Roberts, Commissioner

Debra Birkby, Commissioner

***Lay Budget
Committee Members
Cary Johnson***

Dan Bartlett

Russ Farmer

Joe Bakkensen

Tim Crawford

Submitted By:

Duane Cole, County Manager

ADMINISTRATIVE STAFF

Duane Cole

County Manager

Nicole Williams

Assistant County Manager

Glenn Ahrens

4-H & Extension Staff Chair

M. L. Robison

Finance, Assessment & Taxation Director

Cathie Garber

County Clerk

Josh Marquis

District Attorney

Margo Lalich

Public Health Director

Janet Evans

Juvenile Director

Ed Wegner

Transportation & Development Director

Tom Bergin

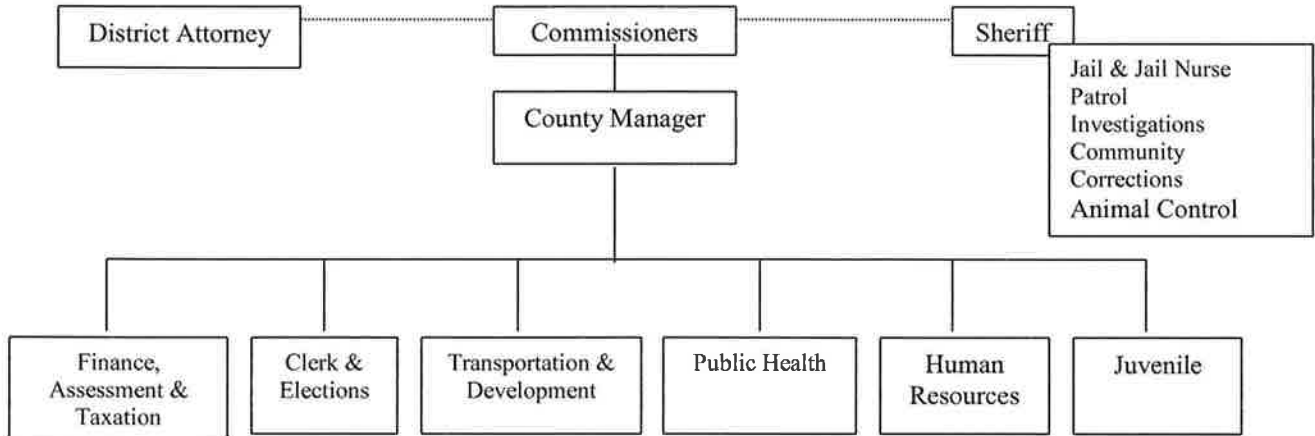
Sheriff

Clatsop County
Organizational Charts by Department



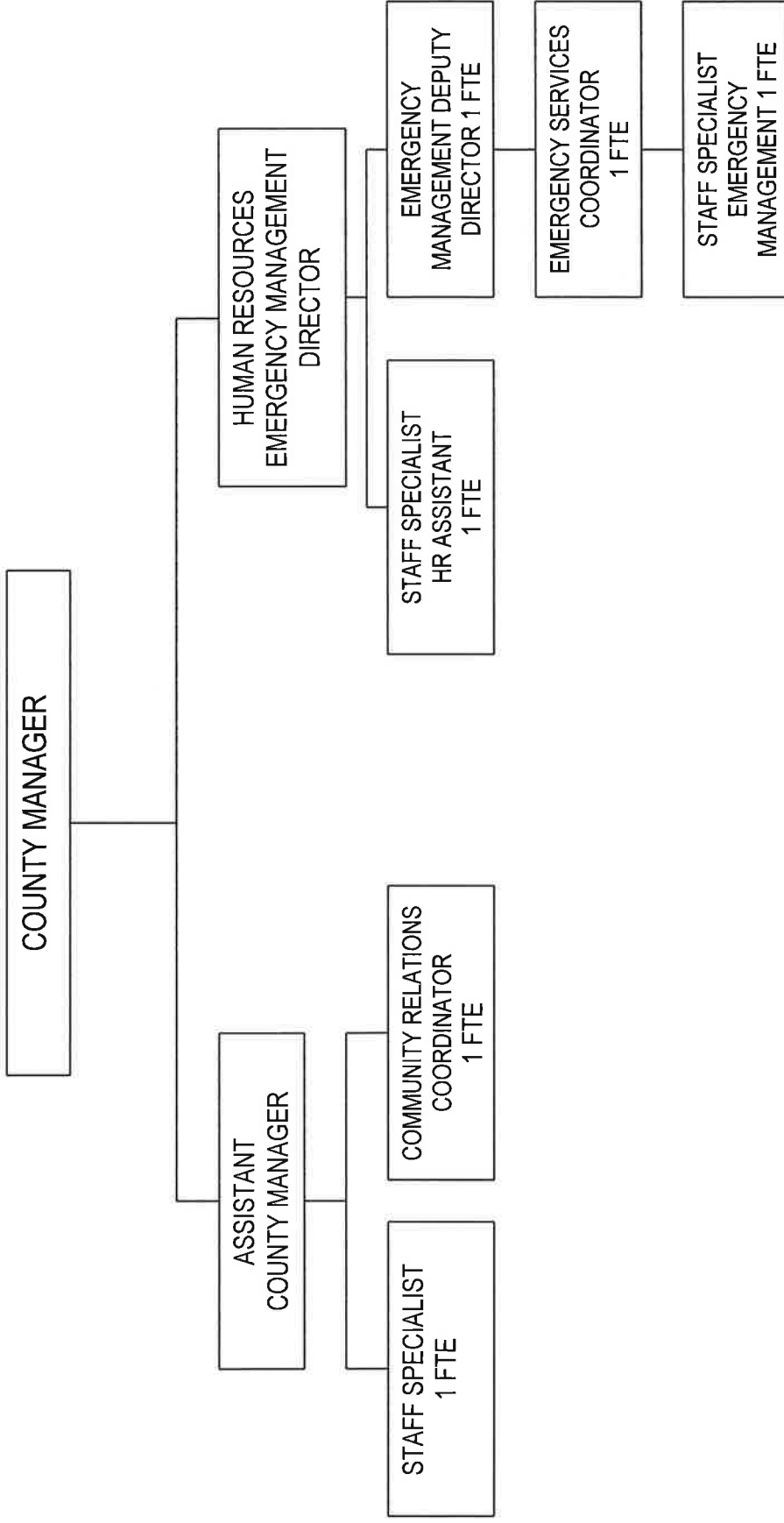
2011-2012

CLATSOP COUNTY ORGANIZATIONAL CHART

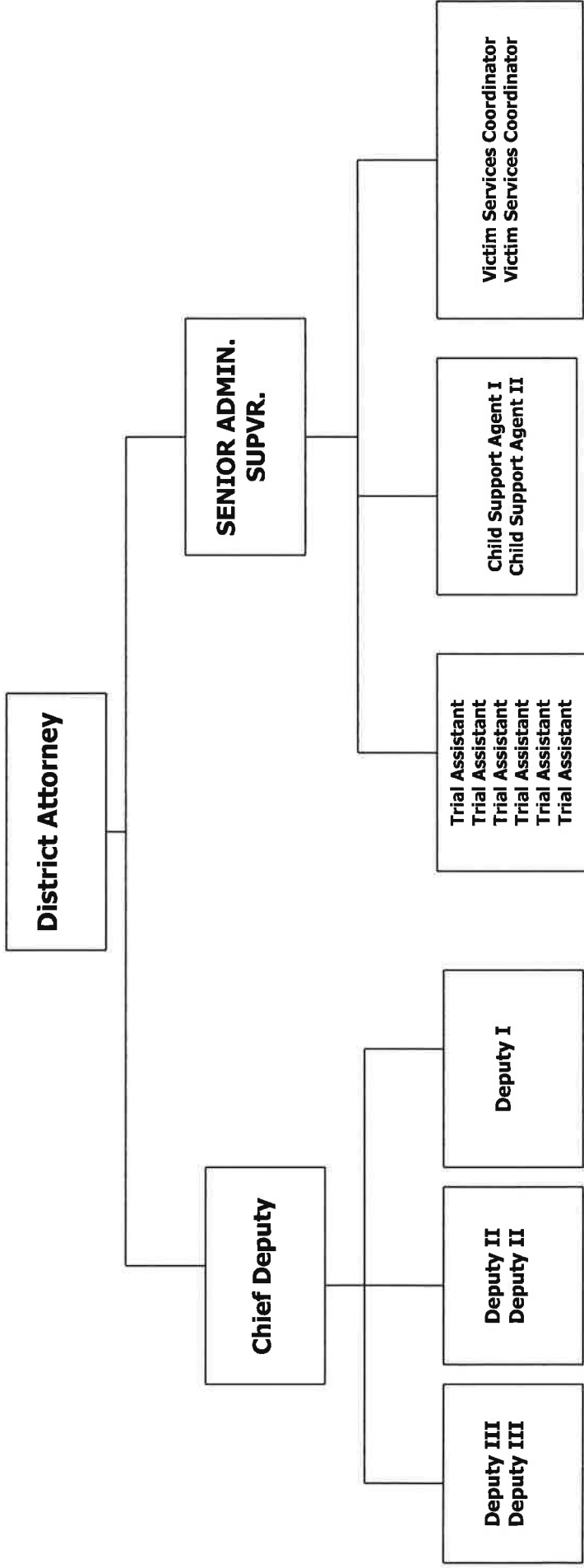


COUNTY MANAGER'S OFFICE

Organizational Chart

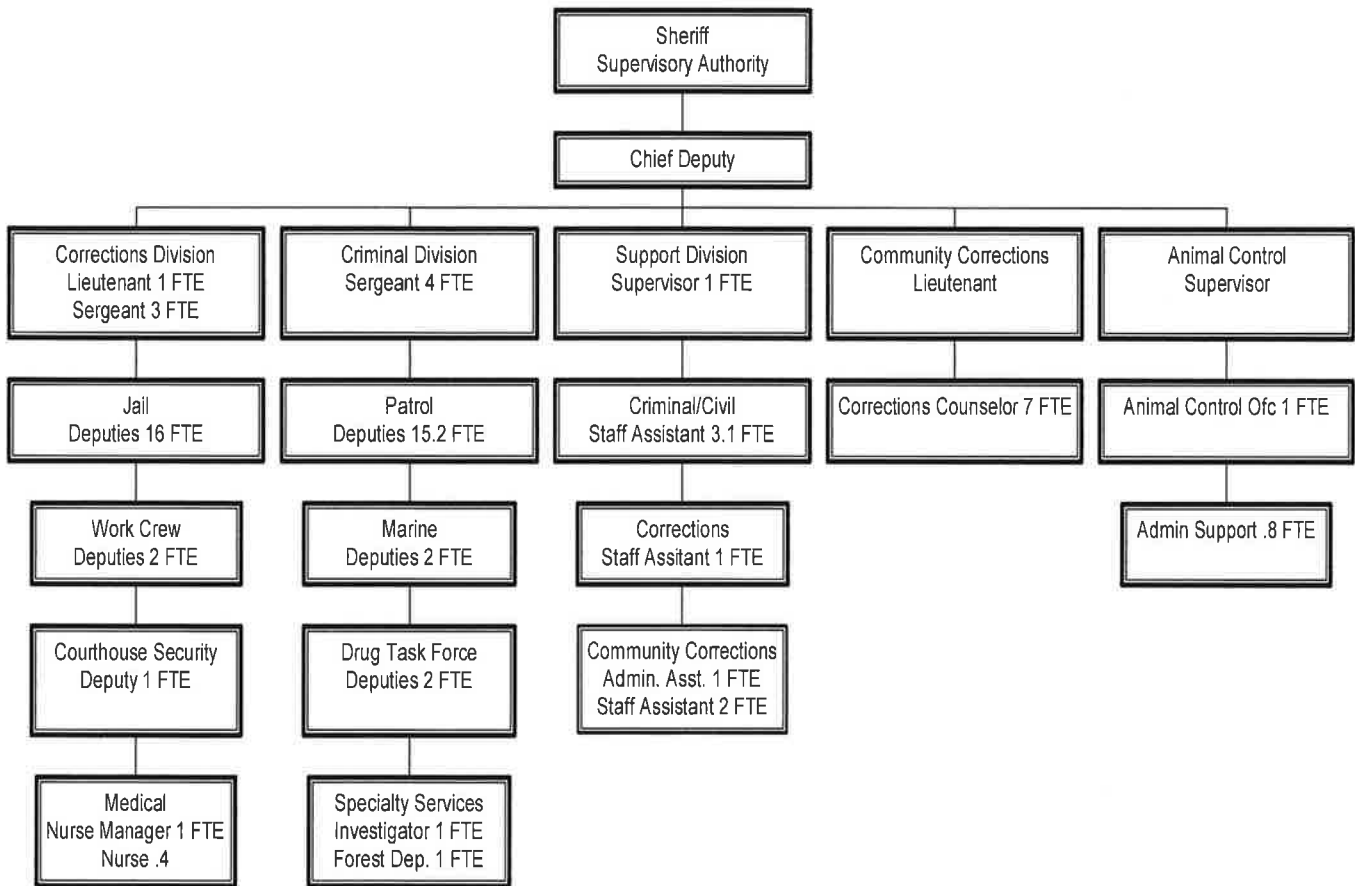


DISTRICT ATTORNEY'S OFFICE

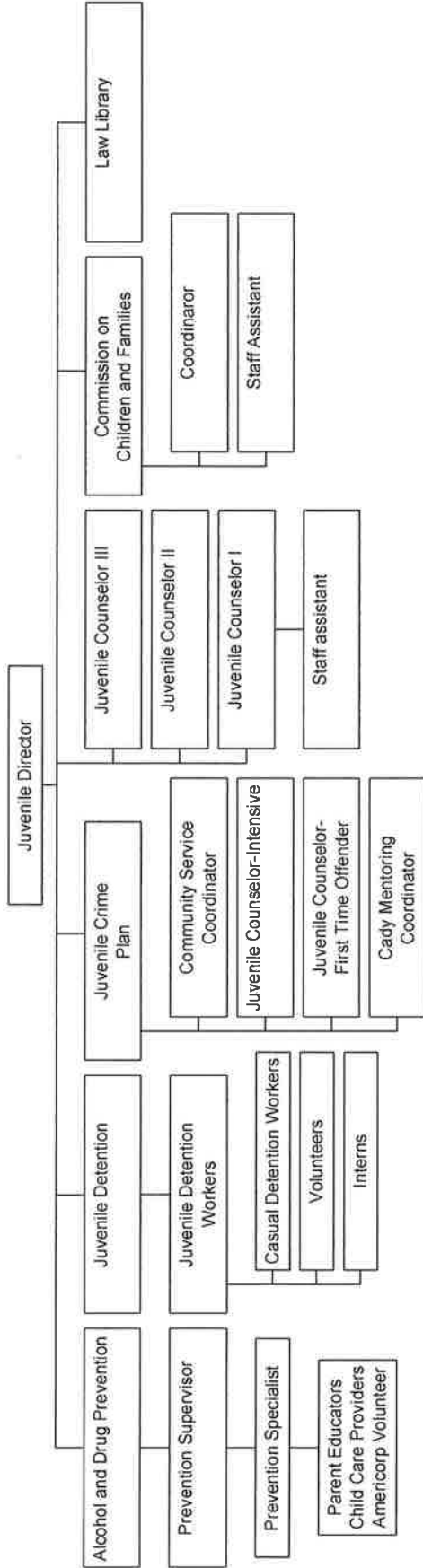


Sheriff's Office Organizational Chart

Sheriff's Office Organizational Chart

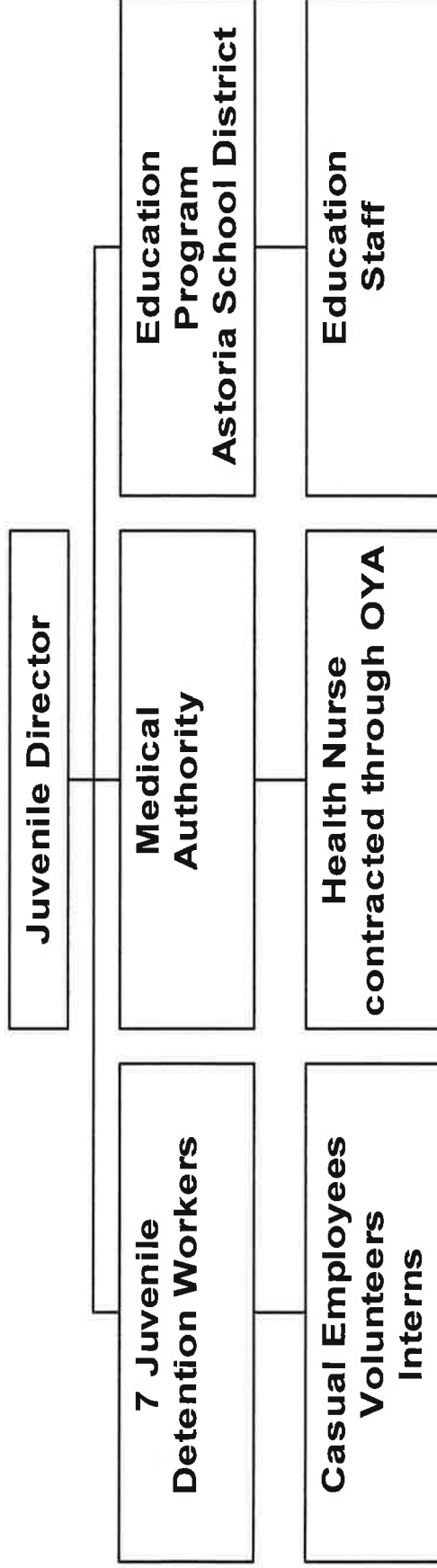


Juvenile Department

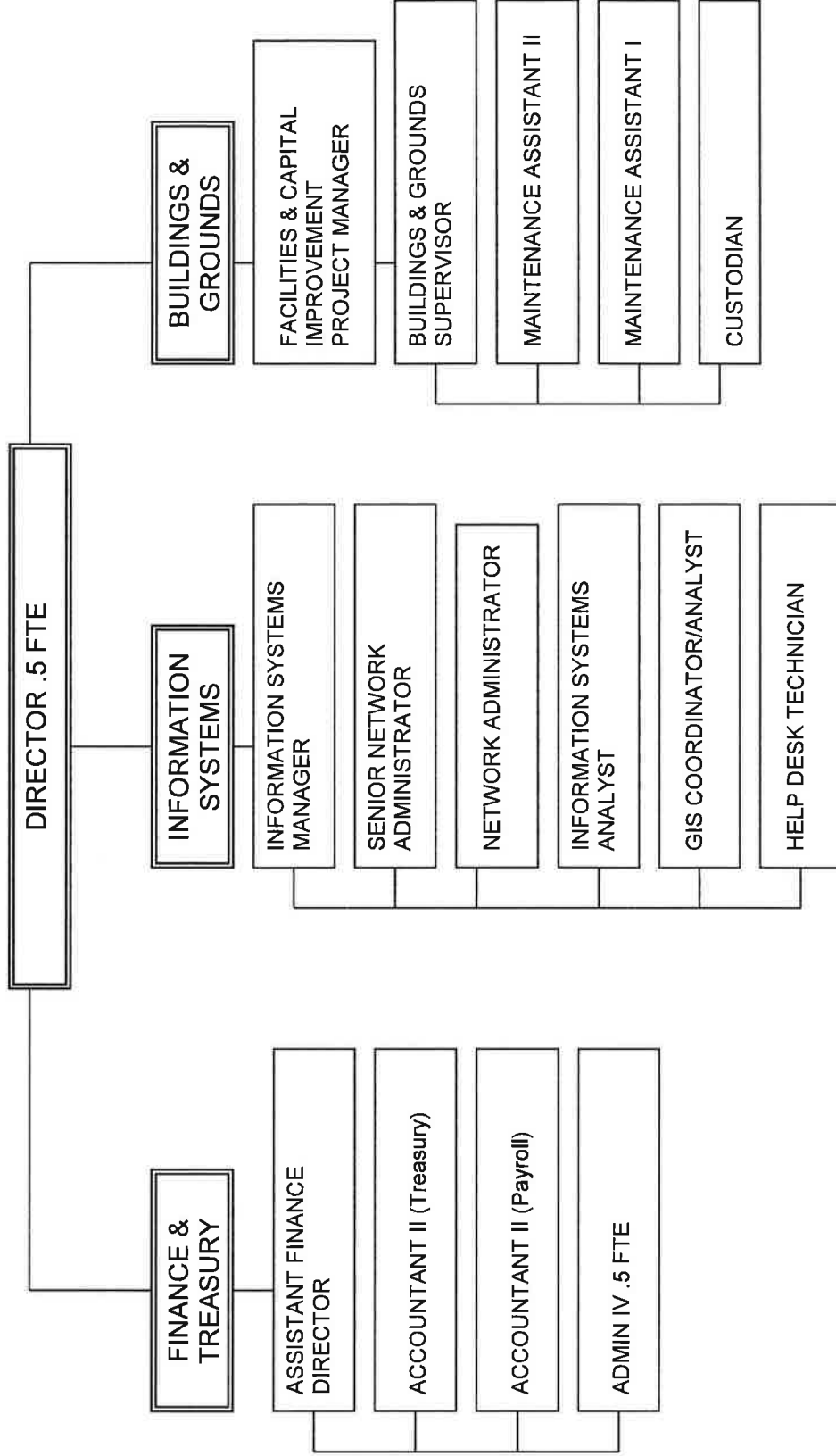


YOUNG'S BAY DETENTION

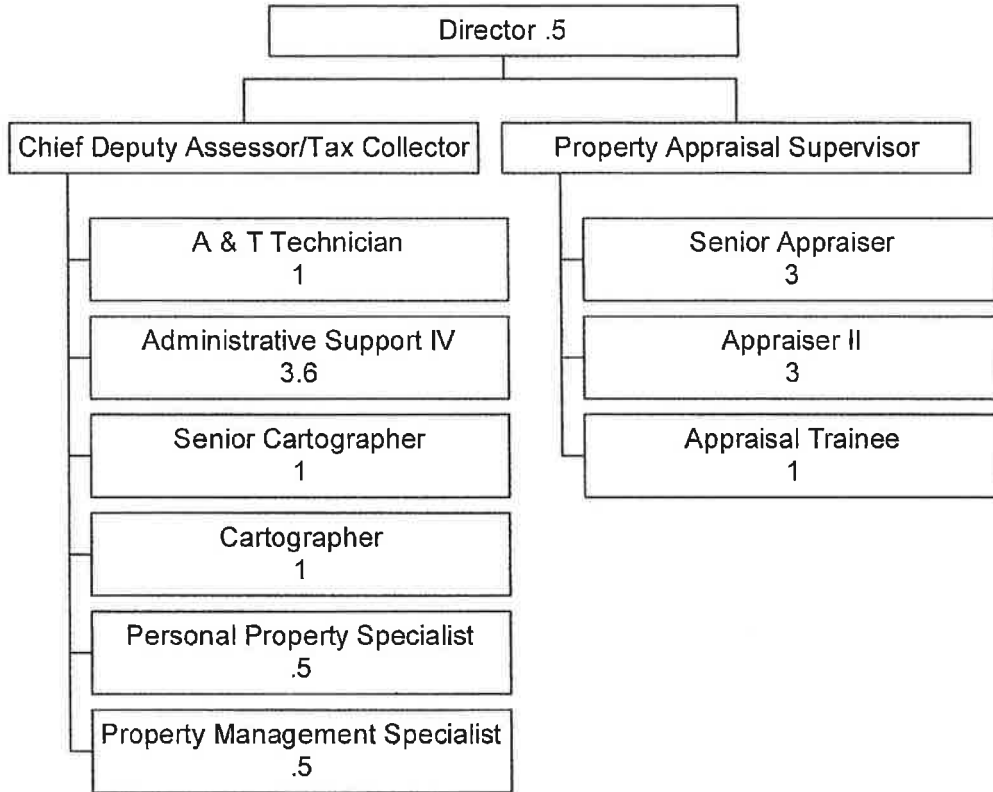
Organizational Chart



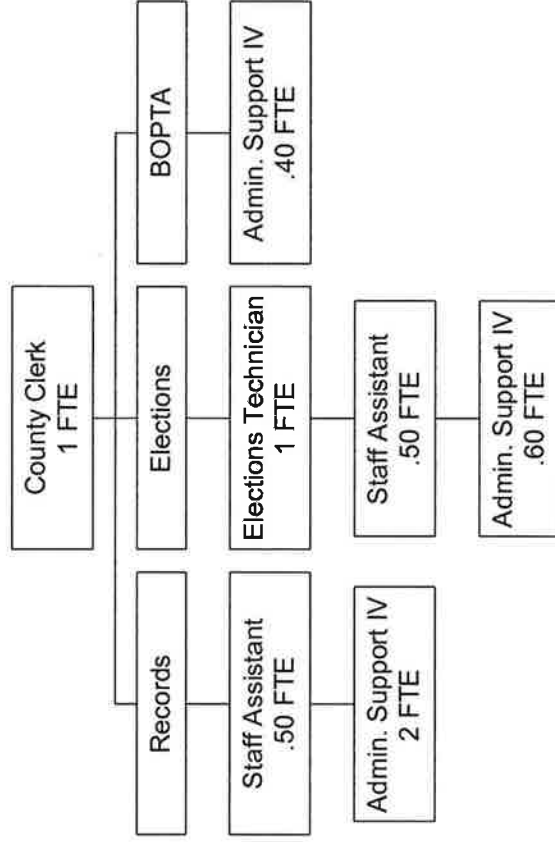
CLATSOP COUNTY
 Finance & Treasury, Information Systems, and Buildings & Grounds



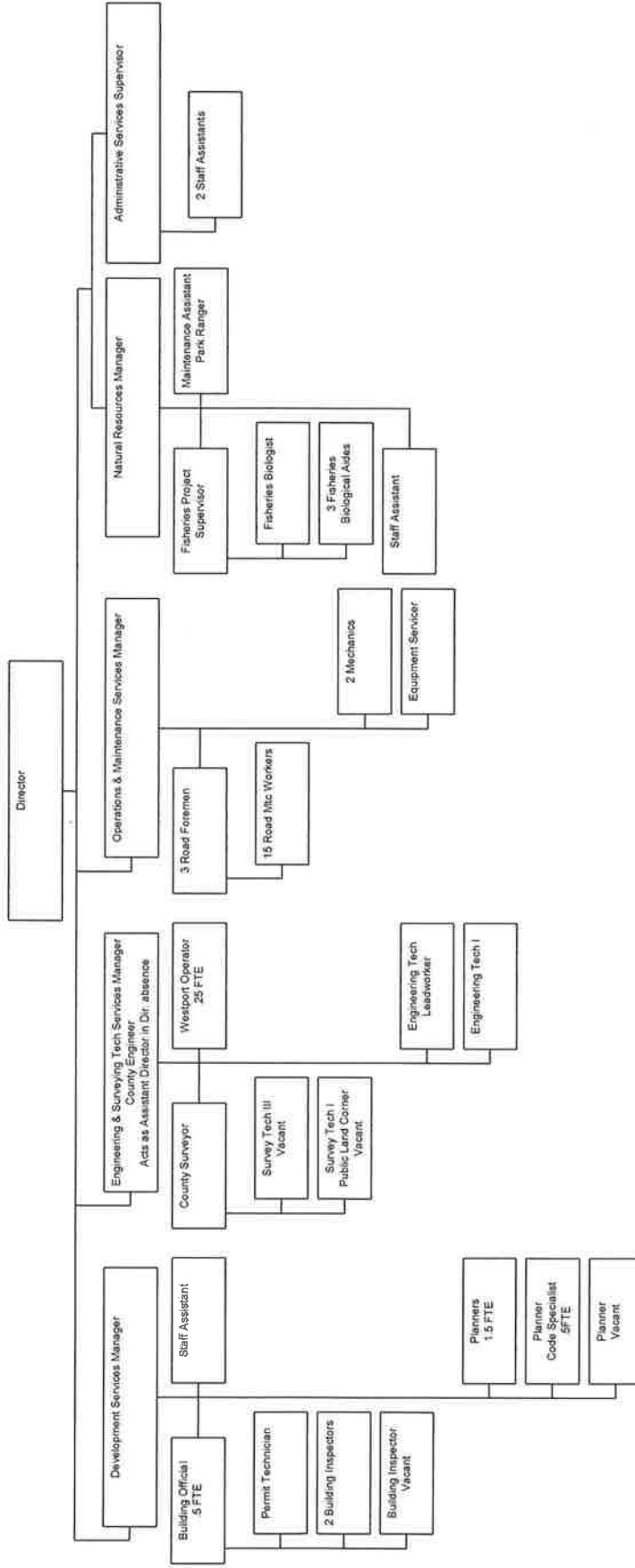
ASSESSMENT & TAXATION

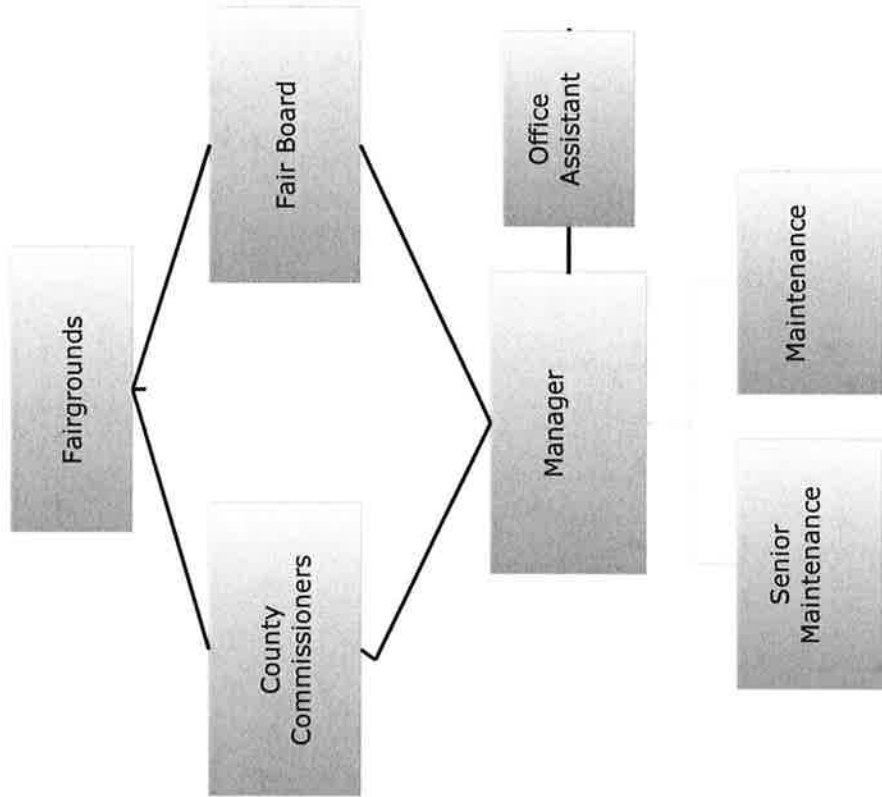


Clerk, Records & Elections



Department of Transportation and Development







Clatsop County 4-H & Extension Service District Organizational Chart



Extension Service

