



Clatsop County

Tsunami Evacuation Facilities Improvement Plan

What is a TEFIP?

When completed, the Clatsop County Tsunami Evacuation Facility Improvement Plan (TEFIP) will be a plan for improving tsunami evacuation routes. This TEFIP will focus on routes that serve multiple purposes in addition to evacuation, such as walking or cycling trails.

What will the TEFIP do?

- Prioritize solutions that benefit the community every day, like investing in recreational trails that double as evacuation routes.
- Increase community resilience and emergency preparedness in Clatsop County.
- Facilitate easier evacuation in the event of a major earthquake and tsunami.
- Identify strategies to make best use of limited public resources.

Questions or comments?

Please email the project manager, Gail Henrikson at Clatsop County: ghenrikson@co.clatsop.or.us

Ways to Get Involved

Online Open House

May 3 - May 15, 2021

Visit www.ClatsopTEFIP.org between May 3 and May 15 to provide feedback on existing trails and evacuation routes.

Info Session

May 6, 2021, 5:30 pm

Join an online presentation and Q&A with the project team on May 6 at 5:30 pm. A link will be posted on www.ClatsopTEFIP.org.

You can also dial in with your phone to listen to the meeting:

Dial: (253) 215-8782

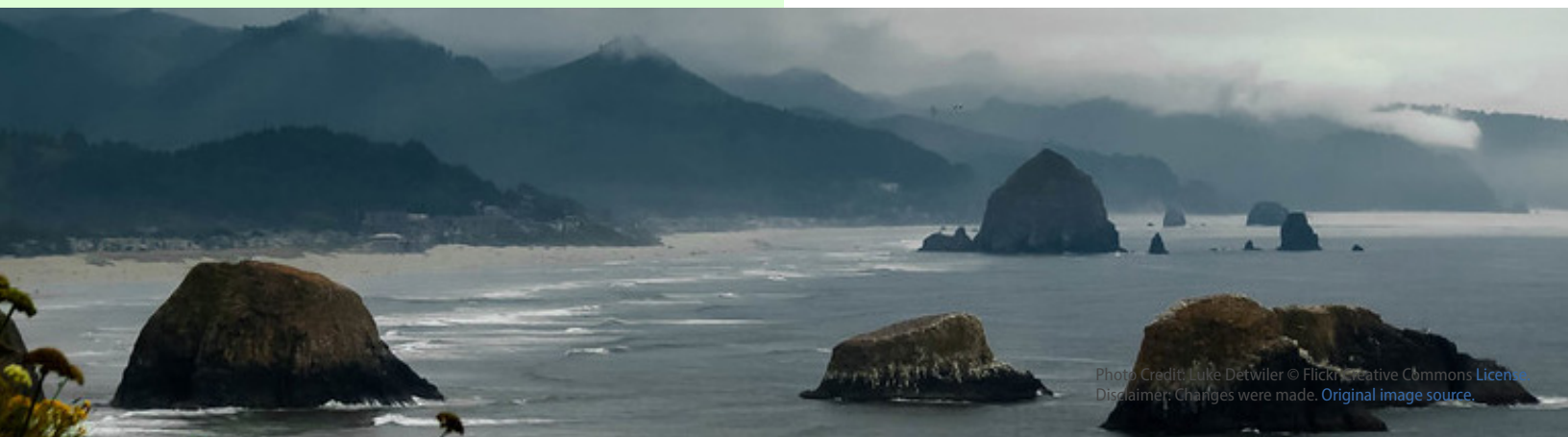
Meeting ID: 913 5652 8079

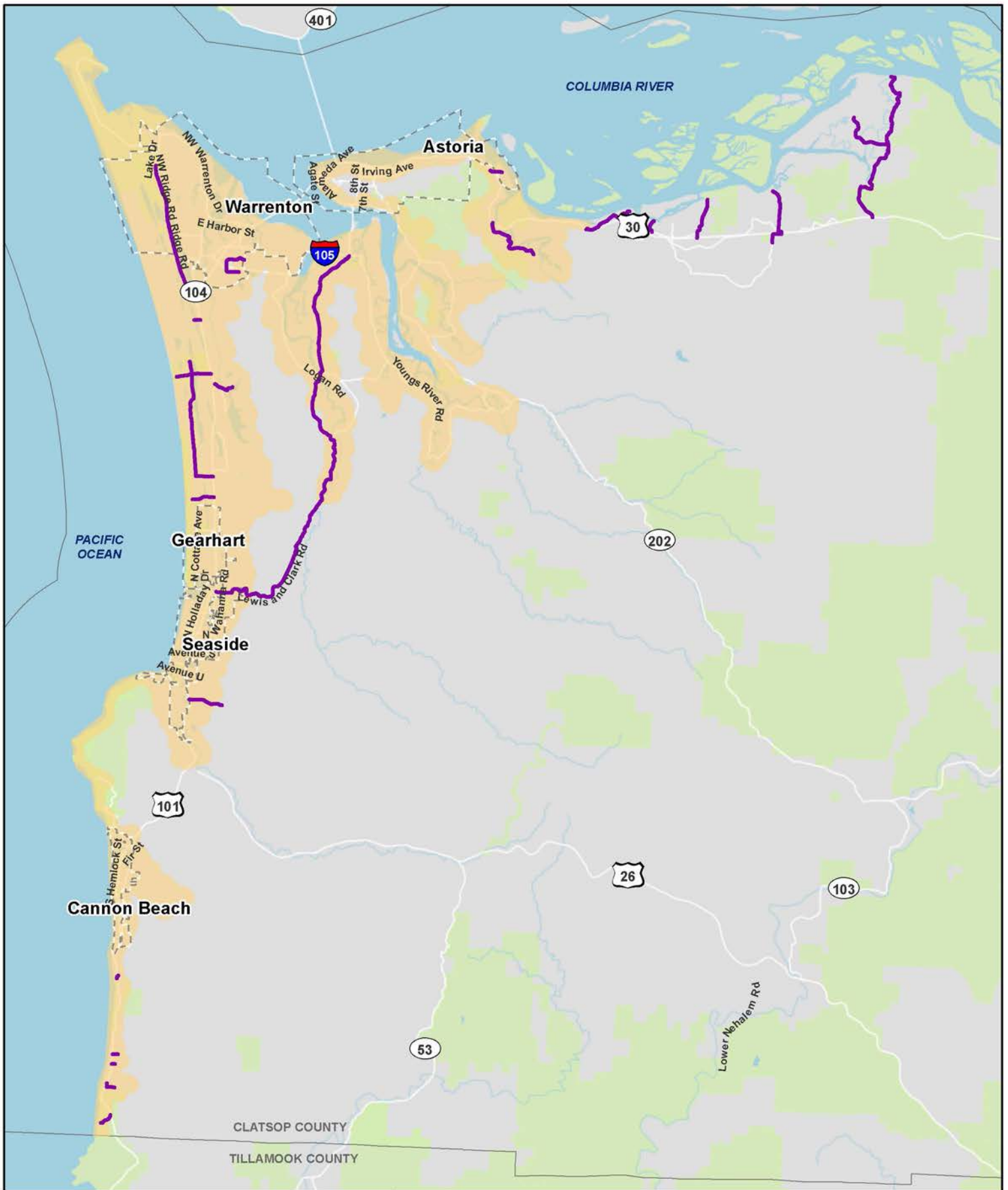
Passcode: 050621


Project Website

Log on to www.ClatsopTEFIP.org anytime to learn more about the project.

www.ClatsopTEFIP.org







Source: © Mapbox, © OpenStreetMap, Clatsop County, ESRI, DOGAMI


**Clatsop County
Tsunami Evacuation Facilities Improvement Plan**

- Tsunami Evacuation Routes
- Project Area
- City Limits
- Clatsop County Limits

Study Area Map
Clatsop County TEPIP

Clatsop County, Oregon

0 2 4 8



Miles

